



**AIREDALE TERRIER CLUB OF SCOTLAND
&
AIREDALE TERRIER CLUB OF SCOTLAND BREED
RESCUE**

(REG CHARITY SC042141)



**BRRRR
BUT
NEARLY
SPRING.**

FEBRUARY 2025

HAPPY NEW YEAR TO ALL OF OUR CLUB MEMBERS



Sad to report the passing of Lt Col Alastair Petrie. Alastair was a long time member of The Airedale Terrier Club of Scotland pictured here with his Airedale Trixie.

The Trixie shown in the above photograph most of us knew well, she was the second Airedale Terrier that Alastair had, his previous Airedale was also called Trixie. Alastair's son Colin tells me that the first Trixie Alastair had was in the 70's, she was known by the regiment as "CO's bathmat" as she laid at the bathroom door when he was in the barracks. He used to take her away with him on manoeuvres.

Alastair was very knowledgeable about the Airedale Terriers involved in World War One and so obviously loved the breed.

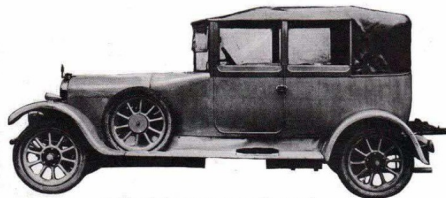
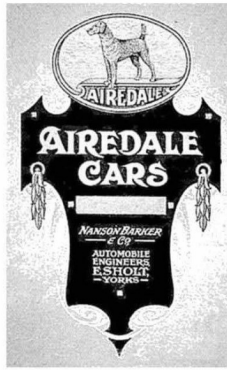
TO OUR MEMBERS AT CRUFTS THIS YEAR.

***DUNCAN BAIN WITH JASMINE
JOANNA GRAHAM WITH AMBER
AND RACHAEL BURNS WITH ARCHIE***





DON'T DECIDE before visiting STAND No. 2
AIREDALE CARS
 Have an individual which offers these and ABOVE the ordinary an unbeatable VALUE.
 "THINK" which produces 191511 usual feeling of ownership.
 It must appeal to you—
 1. The car is built for speed and safety.
 2. The car is built for economy.
 3. The car is built for comfort.
 4. The car is built for reliability.
 5. The car is built for beauty.
 6. The car is built for durability.
 7. The car is built for performance.
 8. The car is built for value.
 9. The car is built for style.
 10. The car is built for class.
 11. The car is built for prestige.
 12. The car is built for distinction.
 13. The car is built for excellence.
 14. The car is built for perfection.
 15. The car is built for greatness.
 16. The car is built for immortality.
 17. The car is built for eternity.
 18. The car is built for infinity.
 19. The car is built for forever.
 20. The car is built for always.
 21. The car is built for never.
 22. The car is built for none.
 23. The car is built for no one.
 24. The car is built for nothing.
 25. The car is built for nowhere.
 26. The car is built for no where.
 27. The car is built for no one, no one, no one.
 28. The car is built for no one, no one, no one, no one.
 29. The car is built for no one, no one, no one, no one, no one.
 30. The car is built for no one, no one, no one, no one, no one, no one.
 Price £425.
 LONDON Distributors—R. S. Marshall, Ltd., 11, Rensler Square.
AIREDALE CARS LTD.,
 ESHOLT, Nr. Shipley, YORKS.



Airedale 11,9 H.P. (1.921)

HAVE YOU SEEN THE MISSING AIREDALE?

A number of years ago one wet Sunday morning, we were sat wondering what we were going to do with the rest of the day. After a quick rummage around on the internet for a look at what was going on in our area, we all finally agreed on a visit to the local Vintage Bus Museum's Open Day.

Lathalmond Depot sits a few miles north of Dunfermline and was used to store Naval stores during World War 2. Since its sale by the Ministry of Defence the depot has housed a number of small enterprises and also the 'Scottish Vintage Bus Museum' which houses over 100 vintage buses, a horse tram, trains and other exhibits.

The weather had improved, so off we set to see what we could see; Annette, me, daughter Rachel and Dougal our Airedale (who was about 9 months old by then). The 'Open Day' was in full swing when we arrived with a good number of stalls, exhibits, trade stands and a display of vintage cars which were being judged by a panel of experts.

As we meandered amongst the array of immaculate old 40's, 50's and 60's cars you can imagine our surprise to see a beautiful old vintage car and even more surprised to find out that it was an Airedale car. Yes, there was such a thing at one time!

Upon our return home I set about digging out what I could find on the internet about this car and managed to source the following information from Wikipedia, (an excellent online resource).

The following text is copied directly from Wikipedia.

'The Airedale is an English automobile made in Esholt, near Shipley, West Yorkshire. It was the successor to the Tiny made by Nanson, Barker & Co in the same town from 1911 until the outbreak of war in 1914.

After the war in 1919 a larger car was developed and the company name changed to Airedale. This new model was rated at 12 hp and had a 1795 cc four-cylinder overhead-valve Dorman KNO engine with Zenith carburettor producing 22 bhp (16 kW; 22 PS) at 1500 rpm. Drive to the rear wheels was through a four-speed gearbox and plate clutch. The car had a wheelbase of 9ft 9 inches (2.97 m) and overall length of 13 feet (4.0 m) with conventional half elliptic leaf springs all round. It seems to have also been known as the 12/24 and 11.9 hp. (contd.4)

In 1922 they had sufficient confidence to take a stand at the London Motor Show and the name of the company was changed from Nanson, Barker and Company to Airedale Cars.

The cars at the show were priced at £575 for a special coupe, £435 for a 4-seat tourer, £425 for a 2-seater with dicky and £375 for a bare chassis.

A larger Meadows engine of 2120 cc was offered in the similar 14 hp model from 1922 [1] This car was slightly larger with a 10 foot 3 inches (3.12 m) wheelbase and 13 feet 6 inches (4.11 m) total length. A bare chassis was £360, an open 2-seater cost £425 and a limousine £625.

Apart from the engines nearly all parts including gearboxes were made on site by Airedale themselves. The cars were very well finished and equipped, which made them expensive. Approximately 90 cars were made, about 55 of the 12 hp and 35 of the 14 hp models.

The company went into liquidation in September 1924, a revival was attempted in 1927 but also failed. 'No cars are known to survive'.

One car has clearly managed to survive and it's heartening to see that it is cherished and very well cared for. We did not get a chance to chat with the owner due to the judging that was taking place, and before we could return to see it later on it was loaded onto the back of a trailer and heading off.

As you can see from the images the Airedale Motor Car was a very fine vehicle, built to last from quality materials and assembled by craftsmen. It would undoubtedly have been a cut above your ordinary motor car of its day, its sad that so few of the were made.

If any of you reading this article know the owner of this car, or of any other Airedale Motors in existence then it would be good if you could contact us here and let us know. Who knows... maybe one day we can invite the Airedale Car to a meet-up with our Airedale dogs? What an occasion that would be.

By the way...the car won 'First in Class'....as you would expect from an Airedale.

Sources

Text –Robert Pyle; - 'Airedale Automobile' history from Wikipedia

Images = Robert Pyle; Wikipedia



JUST A REMINDER

CLUB MEMBERSHIP IS FOR JANUARY TO DECEMBER

SINGLE MEMBERSHIP IS £4:00

JOINT MEMBERSHIP S £6:00

FAMILY MEMBERSHIP IS £6.50

Payment by BACS to Airedale Terrier Club of Scotland

Account No: 00623204

SORT CODE: 83-16-11

Event dates for 2025



A flyer on "What's On 2025" in more detail will be emailed to you next week/

Meanwhile you can mark the dates for events on your calendar.

11th May Easthaven

22 June Tentsmuir Forest and Beach

27 July Templeton Woods Dundee

17th August The Kelpies Falkirk

14th September Lochore Country Meadows, Lochgelly, Fife

9th November Remembrance Service Easthaven

14th December, Scone, Perthshire, Christmas Party.